



Engage. Explore. Empower.
Connecting Visionaries in Radiation Safety, Science and Industry

MIRION
Connect **24**
Annual Users' Conference

July 29 - August 2 | Omni Dallas Hotel, Dallas, TX



MIRION
TECHNOLOGIES

Alpha/Beta Counting and Alpha Spectroscopy Laboratory Updates

Lee Reagan

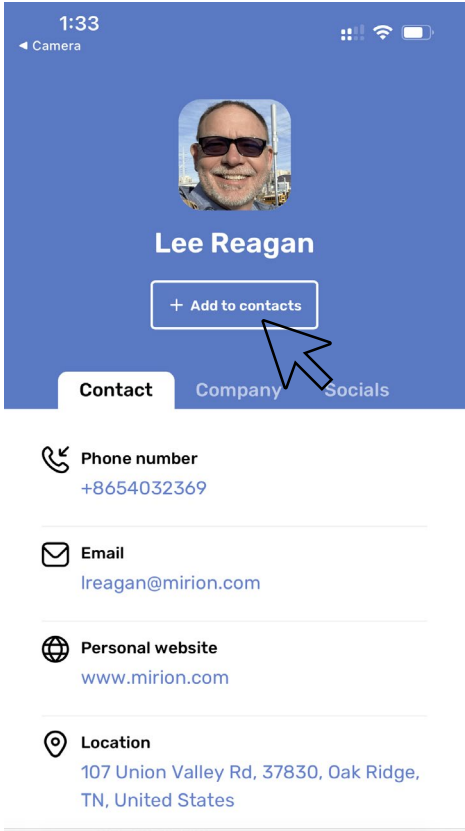
Product Line Manager

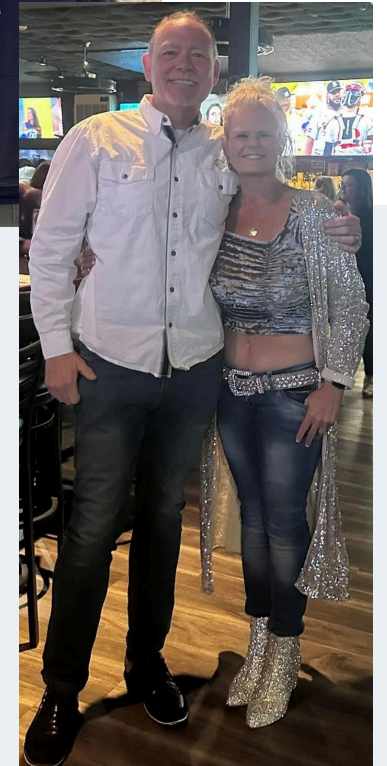
Alpha/Beta Counting & Alpha Spectroscopy

Mirion Connect | Annual Users' Conference 2024

Dallas, Texas

Contact Information





Agenda

- My Products
- Recent Improvements
- Upcoming Changes
- Expected release schedules
- Expected evolution for the alpha/beta and alpha spectroscopy product lines

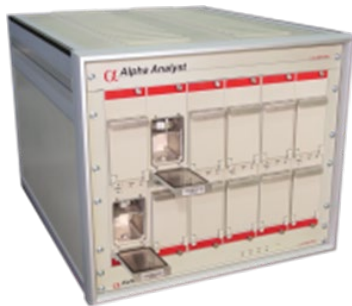
My Responsibilities

	GF Alpha/Beta	Si Alpha/Beta	Alpha Spectro
Analysis Type	Quantitative	Quantitative but exclusive	Quantitative and Qualitative
Range	25kev-high alpha	125 kev-high alpha	Alpha Only
Sample Prep	None to Extensive	None to little	Extensive
Consumables	P-10 Gas	None	Vacuum Pump Oil, Filters
Detector/Entrance Window	Fragile	Rugged	Rugged(ish)
Count Time	Short to Long	Short to Medium	Long - Extremely Long

Alpha Spectroscopy

Alpha Analyst Hardware

- Firmware Update to Improve Startup Reliability



APEX-Alpha Software

- Current V1.4
 - Genie 4.x Compatible
 - Windows 11
- Working on V1.5
 - General Updates
 - Top DOE Requests
 - Trying to Improve Release Date



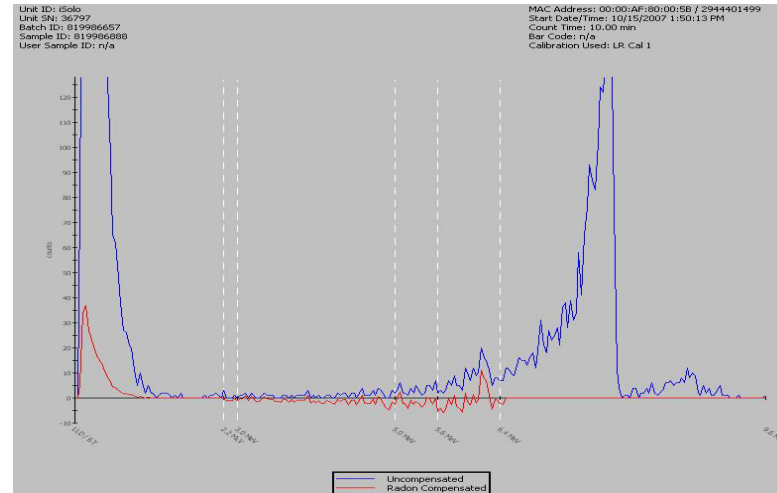
Hardware

- **iSolo** 1.13.02 Firmware Update
- **iMatic** 1.25.02 firmware
 - ▶ USB Connectivity



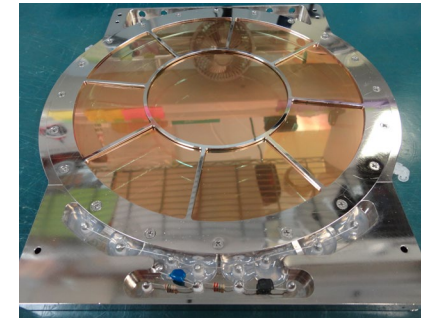
Software

- **iLink** Software 2.0.4 update
 - ▶ Windows 11 Compatible





- **LB4200 Multi-Detector Gas Flow Counter** is ideal for applications requiring high sample throughput with long counting times.
- With the flexibility to accommodate 1-4 drawers and multiple detectors sizes within a system, the **LB4200** can simplify the most demanding lab operations.



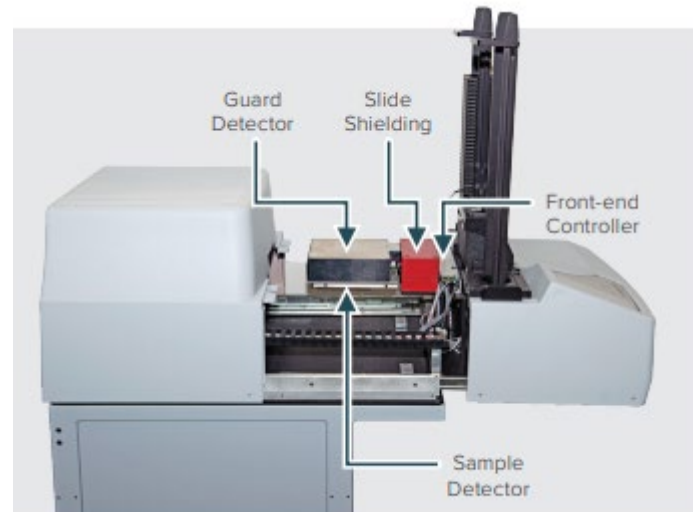
Series 5 LB5500



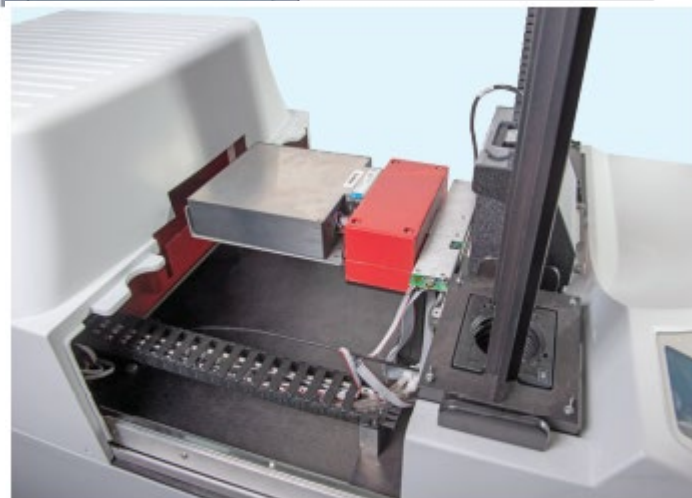
- Automatic single detector ultra-low background counting system
- Gas Stat digital gas conservation and monitoring system
- Fifty planchet sample changer
- Low background passive shielding
- High performance 12.7 cm (5.0 in.) gas flow detector with ultra-thin window 80 $\mu\text{g}/\text{cm}^2$
- Advanced electronic diagnostics continuously monitor operating conditions
- Universal auto-sensing power supply
- Coded positive sample carrier identification



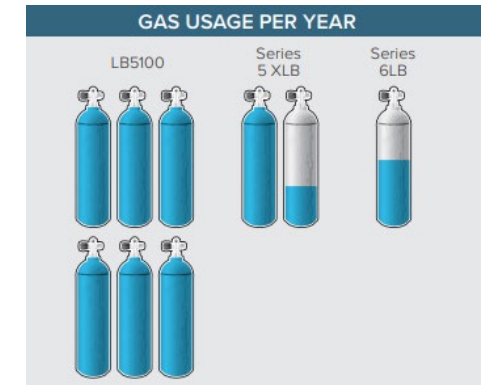
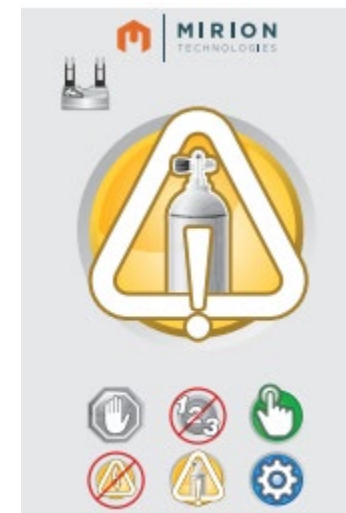
Series 6LB



Door open for sample access



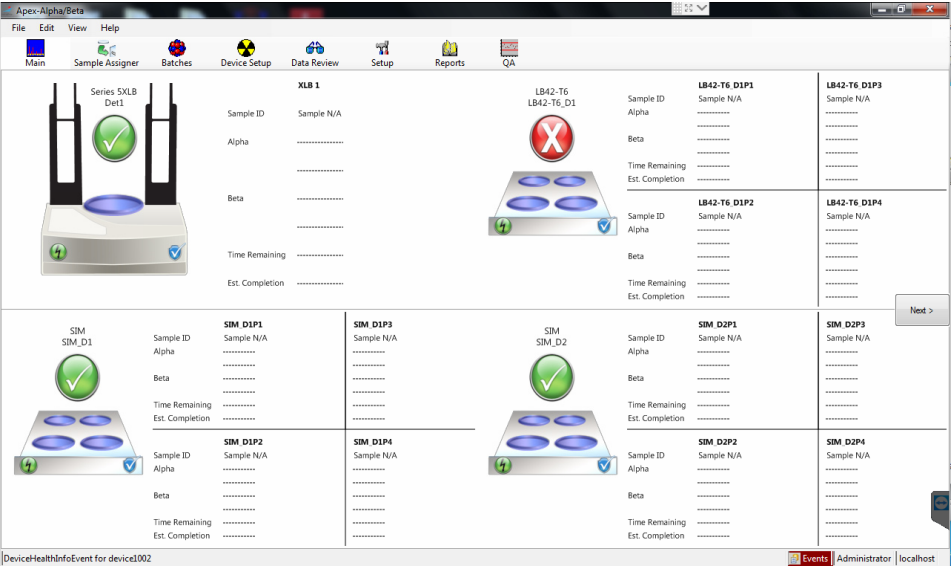
Guard and Sample detectors easily slide out of shield for maintenance



- Automated Plateau and Region of Interest setup
- Calibration and QC Sequences
- Multiple curve-fitting models
- Integrated QA capabilities
- Custom procedure creation for sample type-specific acquisition and analysis
- Sample database tracks samples through log-in, counting and data review processes
- Simplified report customization with integrated report editor
- Common look and feel with the rest of the Mirion family of Apex® Productivity Software

Main View

- APEX uses current counting view
 - Use Data Review and Main View vs single list
 - Shows Gas State, Status, Errors...



S5XLB-1	
Sample ID	System Background_11
Alpha

Beta

Time Remaining
Est. Completion

Drag and Drop Start

- Assign a previously created batch...

Apex-Alpha/Beta

File Edit View Help

Main Sample Assigner Batches Device Setup Data Review Setup

Load Samples

Background check Unknown

Express Count

COUNT

Procedure : 10 Minute Smear

Print Assignment Rpt : No

Auto Load Samples : Yes

Group : A

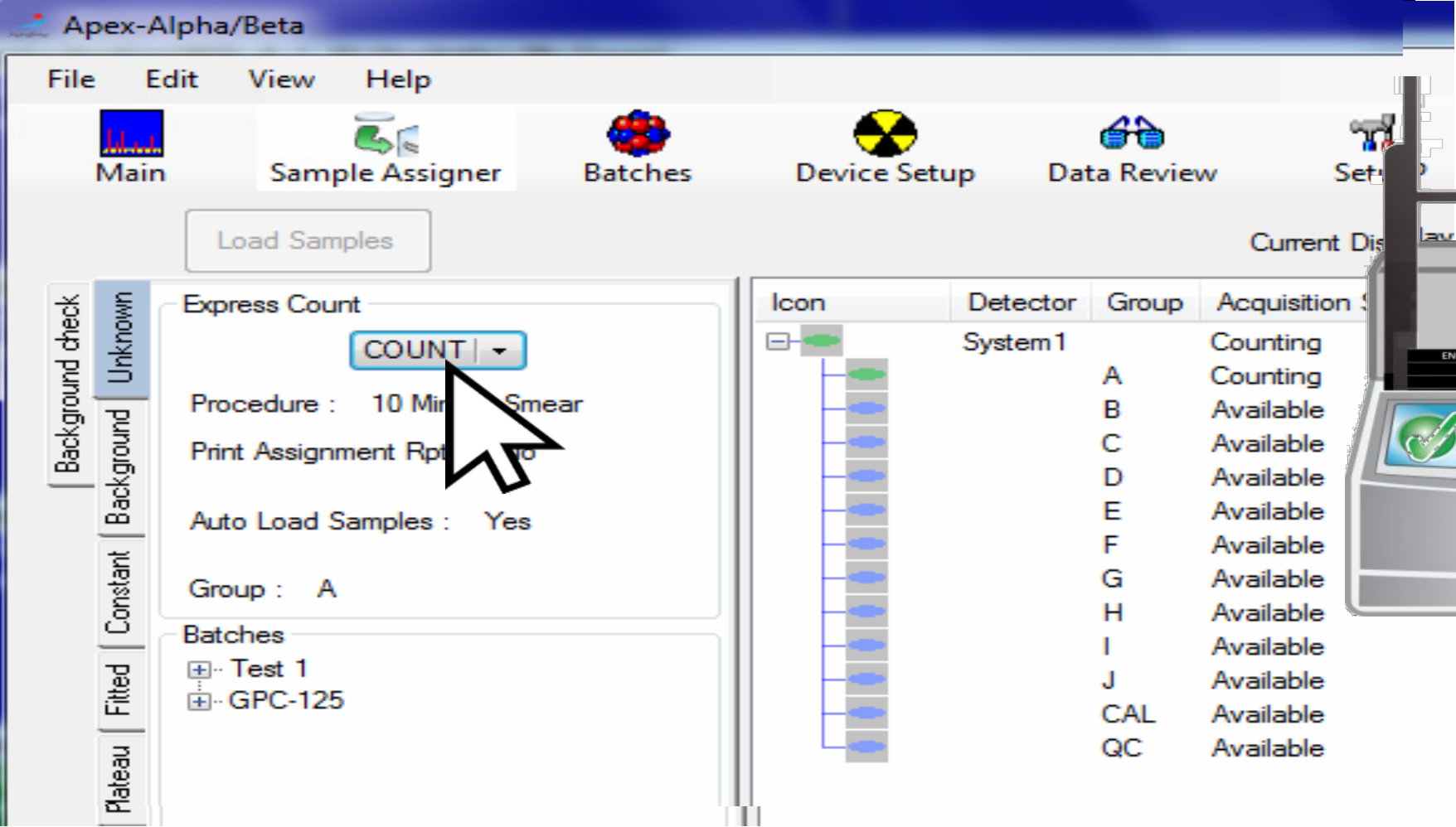
Batches

- Test 1
- GPC-125

Icon	Detector	Group	Acquisition
	System 1		Count
	A		Count
	B		Available
	C		Available
	D		Available
	E		Available
	F		Available
	G		Available
	H		Available
	I		Available
	J		Available
	CAL		Available
	QC		Available

CANBERRA Series 6

Express Count Start



Techs never use software?

- Express and QC Checks
- Auto Approve
- AutoPrint or LIMS Transfer or...
- Custom reports to flag hot samples
- Start Sample and QC Together v2.2



Apex-Alpha/Beta 2.2 Release

Version 2.1

- Windows 10 and 7
- 64 Bit Only Support
- Series 6LB Support
- ATB Count Times
- Express and Sequence 6LB
- Gamma Option for Series 5
- Main Screen Info Group/Carrier
- Batch Versioning
- Manual Calibration
- Calibration/Procedure Share
- Bug Fixes

Version 2.2 release Imminent

- Windows 11
- Barcode Updates
- ISO 11929 Mda Calculation Update
- Procedure + QC Sequence
- Time Delay
- Updated StimuSoft Report Engine
- SQL Server 2022

Version 2.3 in planning

- Client/Server?
- “Tennelec” Count Mode?
- UI Enhancements?

New Series 6 ONLY Features in V2.2

The screenshot displays the 'Procedures' configuration window in Mirion Connect 24. The 'Procedures' tab is active, showing various settings for a procedure named 'ATB Act No Bkg Sub'. A red circle highlights the 'QC Sequence' section, which includes options for 'Before', 'After', and 'Simultaneous' QC, along with 'Count Start Delay' and 'Batch Iteration Delay' settings. A red arrow points from the 'Batch' field in the 'Count Iterations' section to the 'Batch Iteration Delay' section.

QC Sequence

- ☒ Before
- ☐ After
- Choose QC Sequence: QC - Simultaneous C_i
- Count Start Delay: —
- Delay Type:
 - ☐ None
 - ☐ Point in Time
 - ☒ Relative
- Hours: 0
- Minutes: 2
- Batch Iteration Delay: —
- Delay Type:
 - ☐ None
 - ☒ Point in Time
 - ☐ Relative
- Days: 1
- Time: 02:00

- Ties QC Sequence to Sample Procedure
- QC Before, After or BOTH
- Assign Now, Start Count Automatically “later”
- Later can be a delay period or time
- Entire Batch can be repeated again with a custom delay.

Product Updates +

- APEX-Alpha/Beta 2.2 being released now
- APEX-Alpha 1.5 In Development
- Series 6 Options
 - Fixed Stacks
 - New Cart Options



Software Requirements

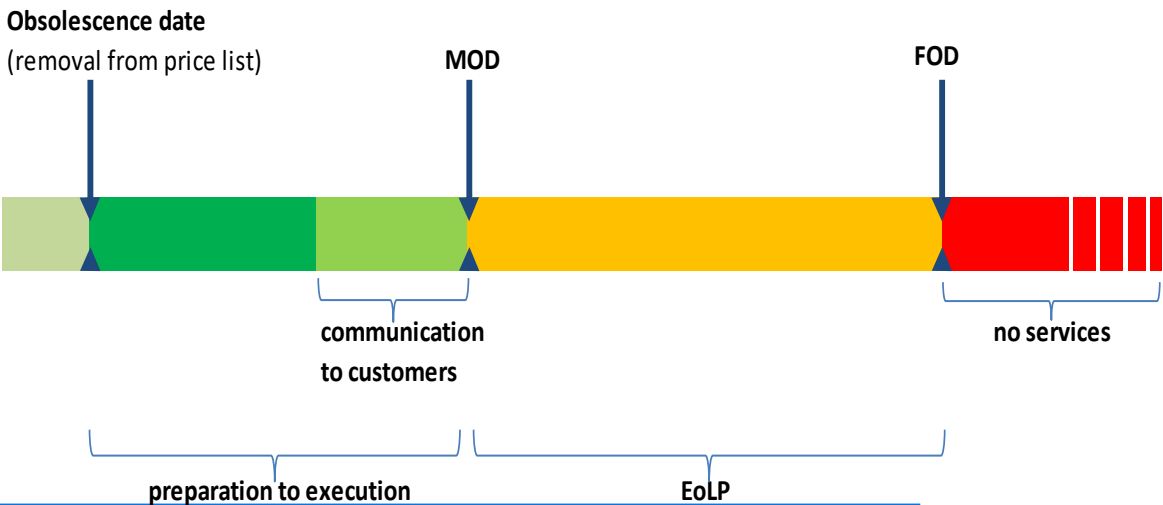
- Fully QA Qualified
- Larger/Less Frequent Releases
- Universally Accepted
- Engineering Tested (Patch)
- More frequent, but possibly not as robust
- Limited Audience

What fits your needs?

Open Secrets

- Developing Special PIPS for Series 6, BUT...
- iSERIES REALLY needs to operate with APEX-Alpha/Beta, BUT...

End of Life Period



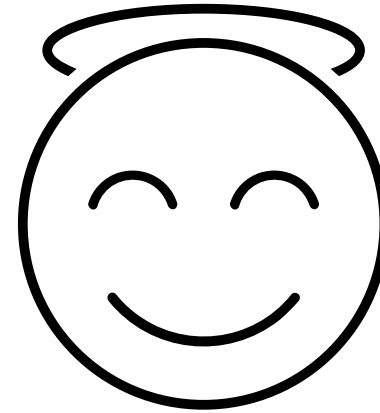
Product	Full Obsolescence Date	Notes
LB4100	2020	LB4200 replacement, Existing Contracts Continue No Board Level Repairs Possible
Eclipse	PC OS Dependent	Limited Support
Series 5 XLB	2026*	Series 6LB replacement Full Support

Speaking of...

I love working with the technology and YOU!
I hope to continue doing this for many years to come!

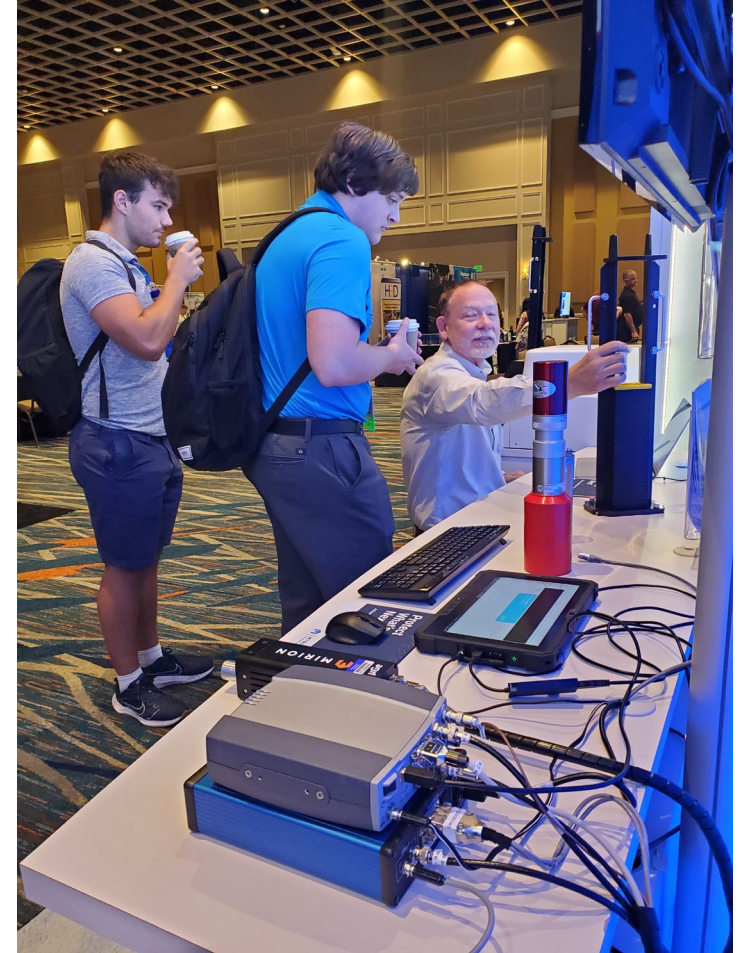
FAQ

- Frazier 55 Years
- Stan 51 Years
- Lee ONLY 35 years

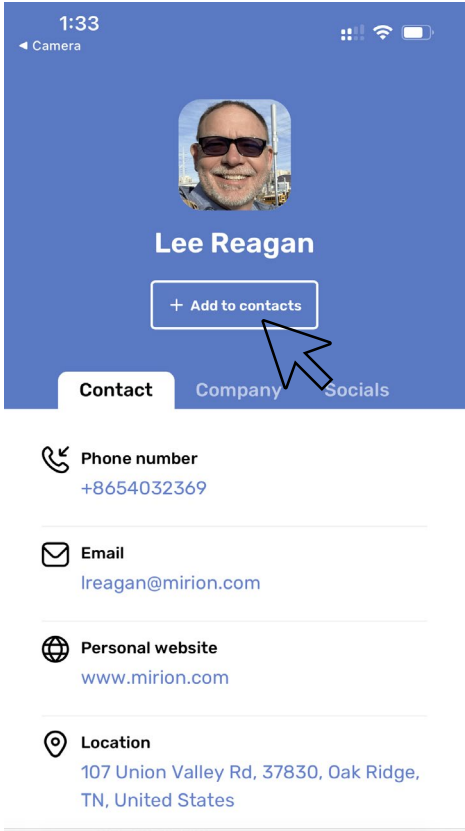


Schedule Reminders

- DEMO ROOM
- Tomorrow (Thursday)
 - Breakfast 7:30-8:30 AM
 - General Session 8:30 -11:30 AM
 - Breakouts 11:30 AM – 12:30 PM
 - Demo Room 11:00 AM – 6:30 PM
 - Group Photo 6:30
 - Group Dinner 6:45 PM – 9:30 PM
- Friday
 - Continental Breakfast in Demo Room 8:00 AM – 10:00 AM



Contact Information



Thank you

